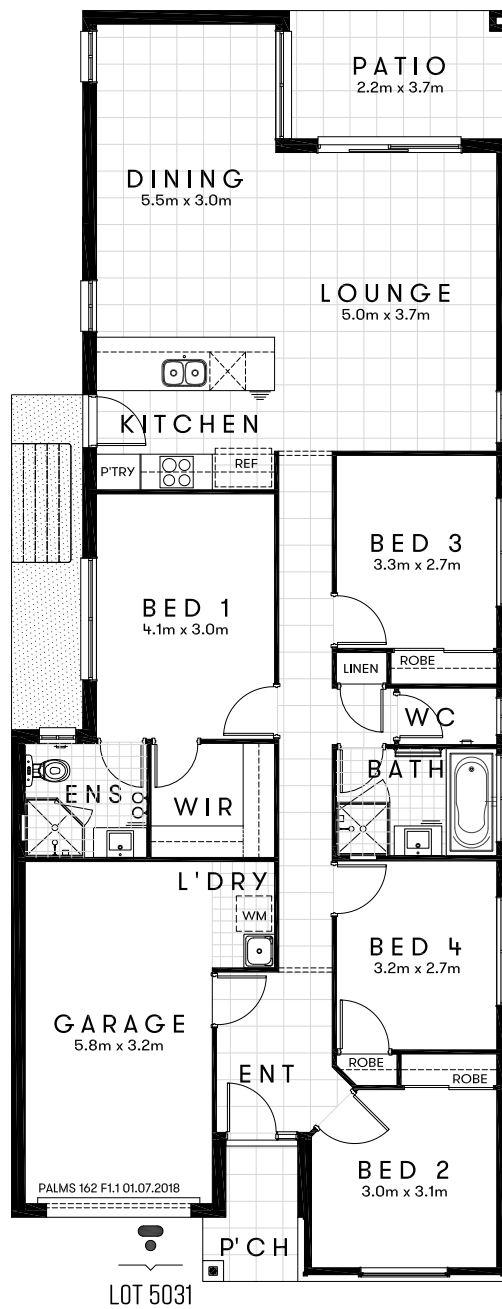
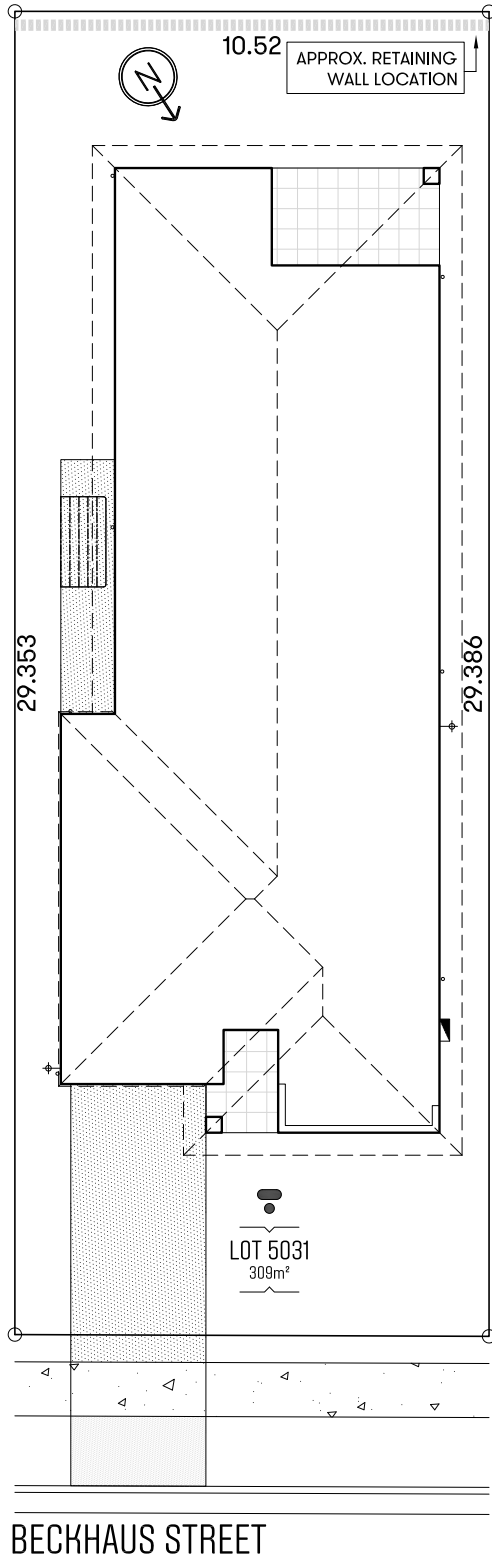


TRIBECA

Design Palms 162 F1.1 Approx. House Area 162m²
Land Area 309m² House Price \$274,980 Land Price \$375,000





HOME OVERVIEW

Design Palms 162 F1.1

Approx. House Area 162m²

Land Area 309m²

House Price \$274,980

Land Price \$375,000

QUALITY INCLUSIONS

- Fixed site costs, no surprises
- 2590mm raised ceiling height
- 20mm manufactured stone bench top to kitchen, bathroom and ensuite
- Quality stainless steel appliances
- Carpeted and tiled throughout
- Superior fittings and fixtures
- Under-mount sink to kitchen
- Floating vanities to bathroom and ensuite
- Niches to bathroom and ensuite showers
- Flyscreens to windows, security screens to external doors
- Blinds throughout
- Covered alfresco
- Turfed and landscaped
- Colour through concrete driveway and pathways
- Fully fenced
- Clothesline & letterbox
- 3 coat paint system
- All homes include BASIX requirements
- Professionally selected external and internal colours and materials